



MANUFACTURER OF STORE FIXTURES AND DISPLAYS SINCE 1925



# LINEA FIXTURE COLLECTION

## EXTENDED 2-WAY RACK

- 1" square tubing
- Statuary bronze finish
- Frame is 28"W
- Hangbar extends 1" past
- Includes Levelers



LNE2W

### 2-Way Rack

66"H x 30"W x 20"L.  
LNE2W



LNE2WADJ

### Adjustable Height 2-Way Rack

Adjusts from 45"H to 72"H  
LNE2WADJ



LN2WCHB

### Curved Hangbar for 2-Way Rack

Replaces existing straight bar on 2-Way Rack.

30"L with a 3" drop.

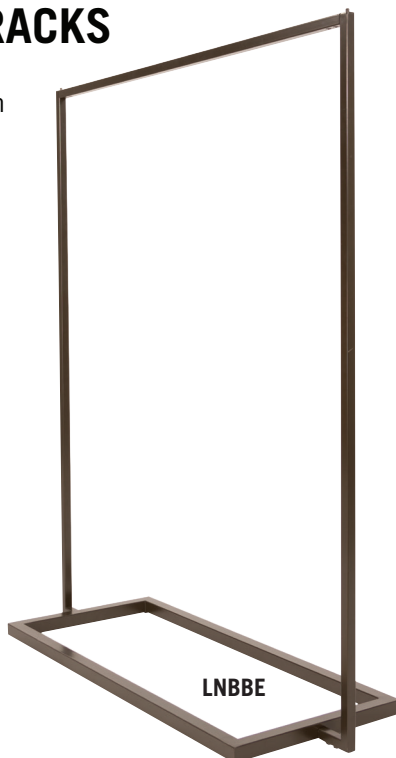
Includes six tab stops on either side of drop.

Statuary bronze finish

LN2WCHB

## BALLET BAR RACKS

- 1" square tubing
- Statuary bronze finish



LNBBE

### Extended Ballet Bar Rack

66"H x 54"W x 20"L.

LNBBE



### Adjustable Height

### Extended Ballet Bar Rack

Height adjusts from 45" to 72"

54"W x 20"L.

LNBBEADJ



**Extended Ballet Bar Rack with Swivel Hangers**  
66"H x 54"W x 20"L.  
Each hang bar swivels independently and  
measure 25" long with tab stops.  
LNSWVBBE



**Double Bar Rack with V-Brace**  
60"L x 20"W.  
Each hang bar adjusts from 45" to 72" high  
LNH60

## ETAGERES

- 1" square tubing
- Statuary bronze finish

### Etagere Shelf Unit

67"H x 16"W x 16"L.  
The two middle  
shelves are adjustable.  
Tempered glass.

LNET1616



### Etagere Hang-Fold Hybrid Unit

67"H x 54"W x 16"L.  
Hang bar measures 37" long.  
Glass shelves measure 16" square.  
The three middle shelves  
are adjustable.  
Tempered glass.

LNHFET





## FREESTANDING MERCHANDISING UNIT

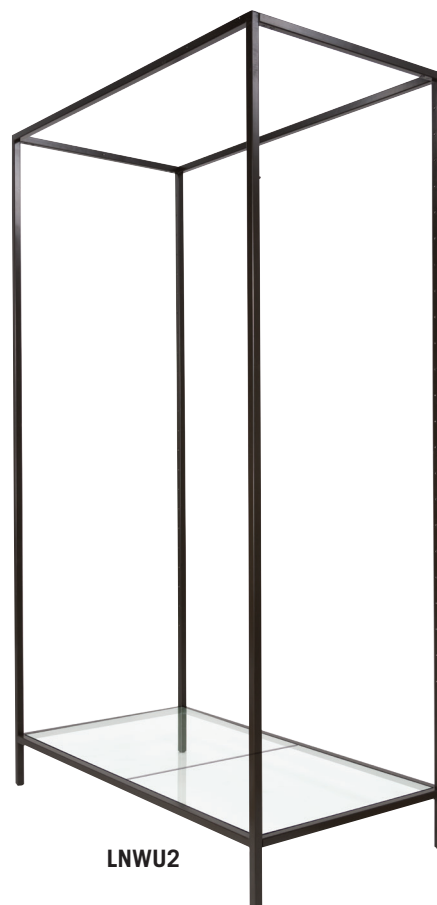
- 1" square tubing
- Statuary bronze finish

### Single Unit

This unit is extremely versatile using any of the optional accessories we offer. From double hanging to hanging and faceouts to shelving, this unit offers it all!

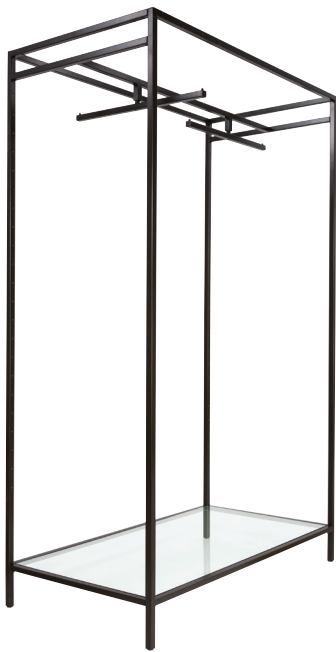
Includes tempered glass bottom shelf.  
The split shelf design saves on shipping costs!  
Each piece of glass measures 26"x26" square x 3/16" thick.  
Overall dimensions are 90"H x 54"W x 28"L.

LNWU

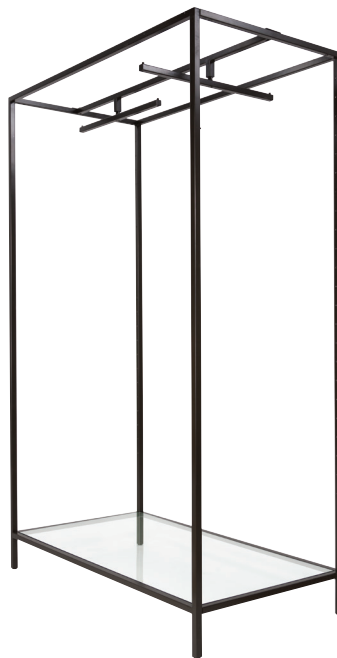


LNWU2





**LNWU**  
Shown w/ LNWUADSWV



**LNWU**  
Shown w/ LNWUFTSWV



**LNWU**  
Shown w/ LNWUSHLF2



**LNWU**  
Shown w/ LNWUFTSWV  
and LNWUSHLF2  
w/ LNWUSHLFAH

## WALL UNIT ACCESSORIES



### Adjustable Swivel Hangbar

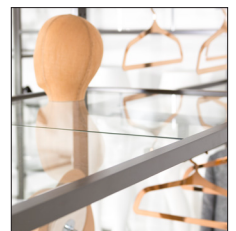
2 Swivel Hangbars: 25-1/8" each  
Adjusts in height utilizing the  
shelf pins on the Freestanding Unit.

LNWUADSWV



### Adjustable Glass Shelf

Shelf measures 54"W x 28"L x 1"H.  
The split glass saves in shipping costs!  
Each piece of glass measures  
approximately 26"square.  
Adjusts in height utilizing the shelf  
pins on the Freestanding Unit.  
LNWUSHLF2



### Fixed Height Swivel Hang bar

2 Swivel Hangbars: 25-1/8" each  
Mounts to the top rail of the  
Freestanding Unit.

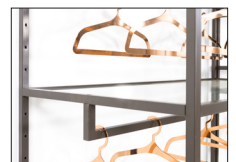
LNWUFTSWV



### Hang Bar For Shelf

Easily mounts to bottom of  
LNWUSHLF2 shelf  
with included hardware.  
52" Long with a 3" drop.

LNWUSHLFAH



## SIGN HOLDERS



LNSH3

### Hangbar Sign Holder

Fits end of straight faceouts  
Holds 3.5"L x 3.5"H card stock  
Statuary bronze finish  
LNSH3



LNSH2

### Saddle Mount Sign Holder

Magnetically sits on 1" square tubing.  
Holds 7"L x 5.5"H card stock  
Statuary bronze finish  
LNSH2



LN4SH4A

### Table Top Sign Holder

Weighted base.  
Holds 7"L x 5.5"H card stock  
Statuary bronze finish  
LN4SHA



### Bulletin Sign Holder

Weighted base.  
Holds 22"W x 28"H card stock  
Statuary bronze finish  
LNSH28



### Card Frame with 4" Swedge Stem

Holds 5.5"H x 7"W card stock  
Statuary bronze finish  
LNSH57



### Card Frame with 4" Swedge Stem

Holds 7"H x 11"W card stock  
Statuary bronze finish  
LNSH711

## MERCHANDISING TABLES



LNNTS2



LNNTB2

### Nesting Tables

#### Small Nesting Table

48"W x 24"L x 22"H  
Statuary bronze finish  
LNNTS2

#### Large Nesting Table

52"W x 24"L x 30"H  
Statuary bronze finish  
LNNTB2



LNNTB2

#### Large Display Table

60"W x 26"L x 34"H.  
Middle shelf is adjustable.  
LNNTB2

Tempered glass shelves are two piece construction to save in shipping costs!







MANUFACTURER OF STORE FIXTURES AND DISPLAYS SINCE 1925

© 2020 Econoco Corporation | 300 Karin Lane • Hicksville, New York 11801  
800.645.7032 | [www.econoco.com](http://www.econoco.com)